

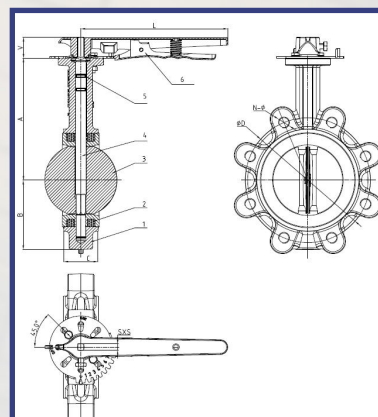


**PHD
Limited**

**Valve
Catalogue**

Wafer Butterfly Valve Fully Lugged (WRAS)

PHD
LIMITED



Material List

	Part Name	Material
1	Valve Body	EN-GJS-450-10
2	Seat	EPDM
3	Disc	SS316
4	Stem	SS420
5	O-Ring	NBR
6	Lever	Carbon Steel

Size Fully Lugged SS Disc

Size	Fully Lugged SS Disc
50mm	FLBW050
65mm	FLBW065
80mm	FLBW080
100mm	FLBW100
125mm	FLBW125
150mm	FLBW150
200mm	FLBW200

Size	Torque N/M PN16
DN50	14
DN65	18
DN80	21
DN100	32
DN125	45
DN150	61
DN200	112

Specification

A quarter-turn rotational motion valve which can be used to stop, regulate and start flow.

A 90° rotation of the handle provides a complete closure or opening of the valve.

Lug fittings M16 on 2"-5" valves, and M20 on 6" and above.

Performance Rating

Maximum Working Pressure: 16 bar

Our Butterfly Valve is WRAS Approved for use with potable water between a working temperature range of 0°C - +85°C

The same valve is also suitable for use on non-potable water systems within a working temperature range of -10°C - + 100°C

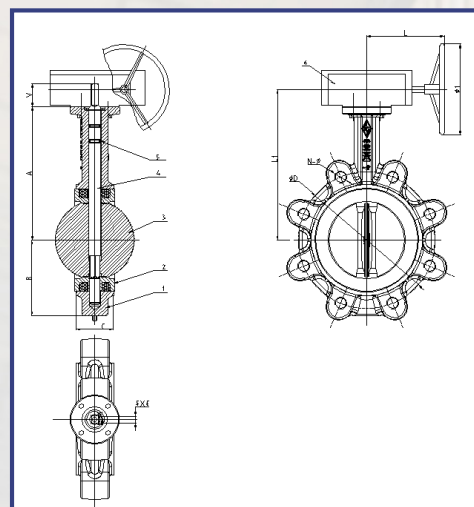
Product Standards

Design	BS EN593
Connection	EN1092-2



Gear Operated Wafer Butterfly Valve

PHD
LIMITED



Material List

	Part Name	Material
1	Body	EN-GJS-450-10
2	Seat	EPDM
3	Disc	SS316
4	Stem	SS420
5	O-Ring	NBR
6	Gear	EN-GJS-450-10

Product Standards

Design	BS EN 593
Connection	EN1092-2
Flange	ISO 5211

Available Sizes

Size	Code
50mm	GOFLB050
65mm	GOFLB065
80mm	GOFLB080
100mm	GOFLB100
125mm	GOFLB125
150mm	GOFLB150
200mm	GOFLB200
250mm	GOFLB250
300mm	GOFLB300

Specification

The Gear Operated Lugged Wafer Butterfly Valve is simple to use, with a compact and 90° slewing crane structure, it is mainly used for low pressure pipelines. Lug fittings M16 on 2"-5" valves, and M20 on 6" and above.

Performance Rating

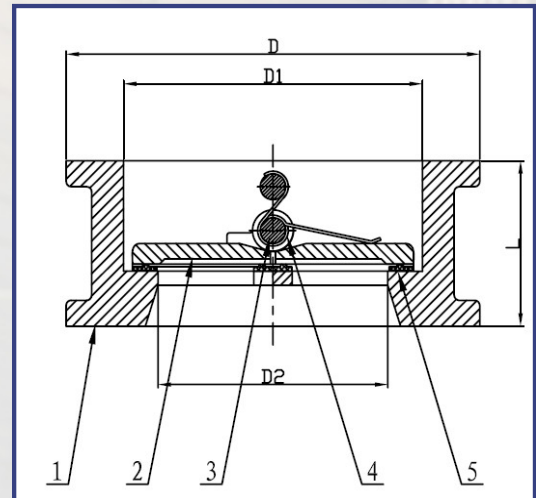
Maximum Working Pressure: PN16

Working Temperature Range: 0°C to +85°C



Double Door Wafer Check Valve

PHD
LIMITED



Available Sizes

DN	Code
50	DDW050
65	DDW065
80	DDW080
100	DDW100
125	DDW125
150	DDW150
200	DDW200

Material List

	Part Name	Material
1	Valve Body	EN-GJS-450-10
2	Disc	EN-GJS-450-10
3	Stem	SS420
4	Spring	SS304
5	Rubber Seat	EPDM

Product Standards

Connection	BS EN 1092 PN16
------------	-----------------

Specification

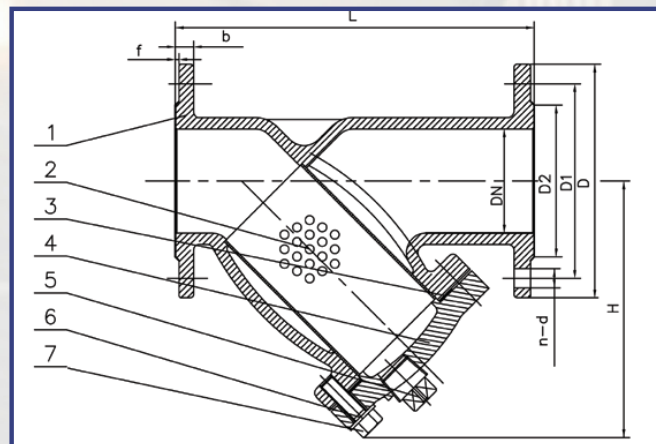
The double door wafer check valve is a one-way check valve. When the medium is flowing forward, the valve flap is opened under the pressure of the fluid. When the medium flows in the opposite direction, the valve flap is closed under the spring force and the reverse fluid pressure.

Performance Rating

Working Pressure: PN16

Working Temperature Range: 0°C to +85°C (Epoxy),
-10°C to +120°C (Painted)





Available Sizes

DN	Code
50	YTS050
65	YTS065
80	YTS080
100	YTS100
125	YTS125
150	YTS150
200	YTS200

Material List

	Part Name	Material
1	Valve Body	EN-GJS-450-10
2	Screen	SS304 (Perforated)
3	Gasket	EPDM
4	Bonnet	EN-GJS-450-10
5	Plug	Mall Iron Galv
6	Bolt	Carbon Steel ZP
7	Flat Washer	Carbon Steel ZP

Product Standards

Design	EN558-1
Connection	EN1092-2

Specification

The strainers main purpose is to remove impurities in the system through the filter to prevent particulate impurities from entering the pipeline and causing damage to the fittings throughout the equipment pipeline.

Performance Rating

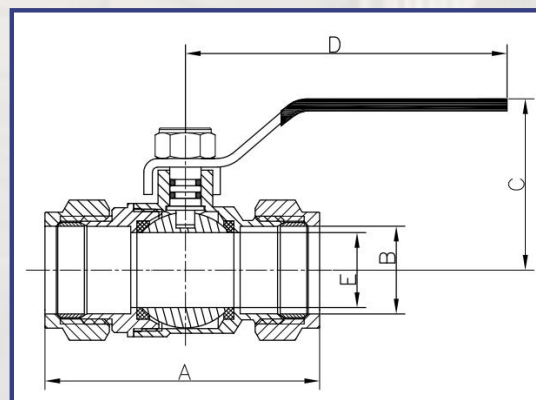
Maximum Working Pressure: 16 bar

Working Temperature Range: 0°C to +85°C (Epoxy, WRAS), -10°C to +120°C (Painted)



Brass Ball Valve BBVC

PHD
LIMITED



Material List		
	Part Name	Material
1	Body	Brass
2	Bonnet	Brass
3	Ball	Brass/Stainless Steel
4	Seal	PTFE
5	Stem	Brass
6	O-Ring	EPDM
7	Handle	Steel

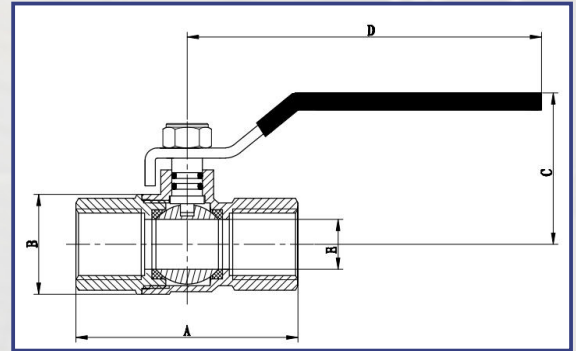
Specifications	
Thread	ISO 228
Working Temperature Range	-10°C to +120°C
Working Pressure	25 Bar

Size (mm)	A	B	C	D	E	Approx. KG/Pc
15mm	64	15	51	95	13.5	0.21
22mm	68	22	55	95	17	0.29
28mm	83	28	59	126	24	0.5



Brass Ball Valve BBVT

PHD
LIMITED



Material List

	Part Name	Material
1	Body	Brass
2	Bonnet	Brass
3	Ball	Brass/Stainless Steel
4	Seal	PTFE
5	Stem	Brass
6	O-Ring	EPDM
7	Handle	Steel

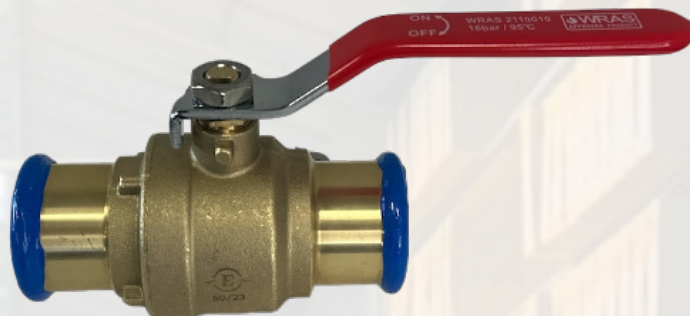
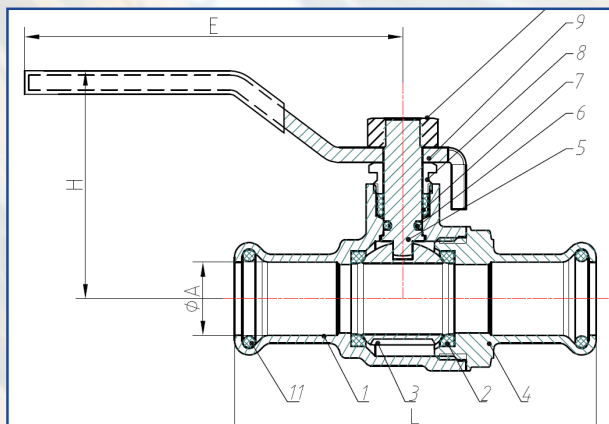
Specifications

Thread	ISO 228
Working Temperature Range	-10°C to +120°C
Working Pressure	25 Bar

Size (mm)	A	B	C	D	E	Approx. KG/Pc
1/2"	59.4	29.5	54.2	95	14.8	0.21
3/4"	67	35.5	57.6	95	19	0.30
1"	77	42.7	60.6	126	24	0.48
1 - 1/4"	93	53	75.8	140	30.2	0.72
1 - 1/2"	99	63	81.3	140	37	0.93
2"	117	79	88.5	165	47	1.48



Press Fit Lever Ball Valve



Material List

	Part Name	Material
1	Body	DZR Brass
2	Ball Seat	PTFE
3	Ball	Brass
4	Bonnet	DZR Brass
5	Stem	Brass
6	O-ring	EPDM
7	Packing	PTFE
8	Lock Nut	Brass
9	Handle	Q235+PVC
10	Nut	SS304
11	O-ring	EPDM

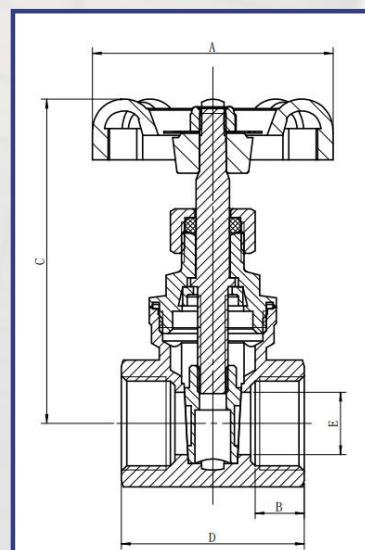
Specifications

Thread	ISO 2768-mk
Working Temperature Range	-10°C to +99°C
Working Pressure	16 Bar

Size (mm)	A	L	H	E	CODE
15mm	15	74	51	88	LPBV015B
22mm	22	86	54	88	LPBV022B
28mm	28	99	63.5	88	LPBV028B
35mm	35	111.1	67.5	155	LPBV035B
42mm	42	139.8	80	155	LPBV042B
54mm	54	164.5	92.1	165	LPBV054B



Brass Gate Valve BGV



Material List

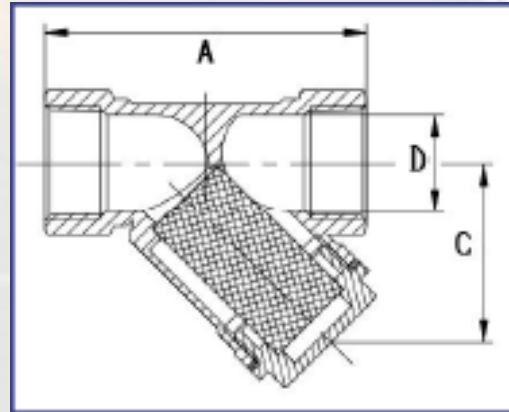
	Part Name	Material
1	Body	Brass
2	Gate	Brass
3	Filler	PTFE
4	Bonnet	Brass
5	Lock Cap	Brass
6	Stem	Brass
7	Handwheel	Cast-Iron
8	Nut	Stainless Steel

Specifications

Thread	ISO 228
Working Temperature Range	-10°C to +120°C
Working Pressure	20 Bar

Size (mm)	A	B	C	D	E	Approx. KG/Pc
1/2"	55	12	73	41	14	0.26
3/4"	55	13	75	43	15	0.29
1"	60	14	83	48	19	0.42
1-1/4"	70	15	100	53	25	0.62
1-1/2"	70	15	110	54	31	0.80
2"	80	16	130	61	40	1.15
2-1/2"	100	22	165	78	54	2.35

Brass Y Strainer BYTS



Material List

	Part Name	Material
1	Body	Brass
2	Bonnet	Brass
3	Filter	Stainless Steel
4	Gasket	PTFE

Specifications

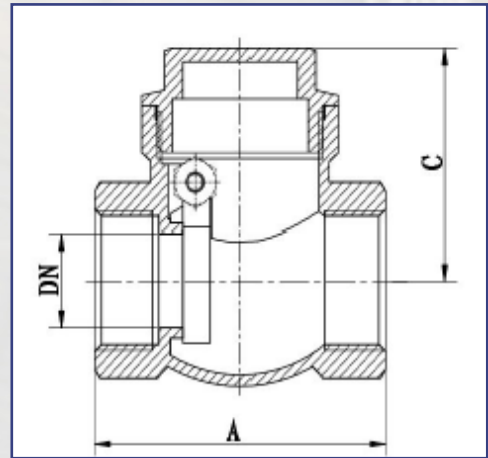
Thread	ISO 228
Working Temperature Range	-10°C to +120°C
Working Pressure	16 Bar

Size (mm)	A	B	C	D	Mesh	Approx. KG/Pc
1/2"	56.5	32.5	32.5	18	40	0.14
3/4"	69	36	36	22.5	40	0.2
1"	80	42	42	28.5	40	0.33
1-1/4"	96	52.5	52.5	36	40	0.59
1-1/2"	105	61.5	61.5	42.5	40	0.75
2"	125	75	75	54	20	1.29



Brass Swing Check Valve LL5007

PHD
LIMITED



Material List

	Part Name	Material
1	End Cap	Plastic
2	Screw	Brass
3	Bonnet	Brass
4	Body	Brass

Specifications

Thread	ISO 228
Working Temperature Range	-10°C to 120°C
Working Pressure	16 Bar

Size (mm)	A	C	Approx. KG/Pc
1/2"	47.5	34.5	0.16
3/4"	56	39	0.22
1"	63	46.5	0.33
1-1/4"	71	51	0.52
1-1/2"	80.5	59.5	0.73
2"	93	67	1.09
2-1/2"	105	77	1.84
3"	123	81	2.54
4"	162	101	4.56